

2023–2024 ANNUAL REPORT



COUNCIL ON SOCIAL WORK EDUCATION

Contents

2023–2024 Annual Report Letter

- 3 Welcome Letter From the President and the Chair of the Board

Providing Leadership for the Future of Social Work Education

- 4 CSWE Appoints Dr. Megan Fujita As Vice President of Education
- 5 Accreditation by the Numbers
- 5 Social Work Program Candidacy in the 2023–2024 Fiscal Year
- 5 Accreditation Volunteers and Visits by the Numbers
- 6 About BOA and Site Visitors
- 6 Post-MSW Fellowship Update
- 7 CSWE: A Trusted Leader and Partner
- 8 Social Work Leadership Roundtable Joint Statement on Peace for Israel and Palestine
- 8 CSWE President and CEO Offers Comments at Beloved Community Event
- 9 Research Features New Data: Military Veteran Graduates, Courses Taught in Languages Other Than English

- 9 Commission on Research Takes on Special Projects

- 9 Support After the Maui Wildfires
- 10 CSWE Government Relations

Promoting Quality Teaching, Learning, and Scholarship to Prepare Graduates for the Future of Social Work Practice

- 12 New Book Equips Educators With Essential Strategies for Leading BSW Education
- 12 Substance Use Disorders Education and Leadership Scholar Program
- 13 Doctoral Student Policy Fellowship Program
- 13 Diversity Center Hosts Inaugural Preconference Institute at APM
- 14 A Fond Farewell to a Visionary Leader
- 14 Leadership Changes, Grand Challenges Special Issue Among JSWE Highlights
- 15 Best of JSWE
- 15 Kendall Institute Award Recipients
- 16 Social Work Month Webinar Series

Supporting the Career Development of Students, Faculty, Members, and Administrators

- 17 CSWE Minority Fellowship Program
- 17 CSWE Names Dr. Collina D. Cooke to MFP Leadership Roles
- 17 MFP 50th Anniversary Planning
- 18 The 2024 CSWE Fellows Forum

Fostering a Diverse, Interconnected, and Inclusive Community of Social Work Educators

- 20 CSWE Kicks Off Instagram Presence, Commits to More Visual Storytelling
- 20 Upgrades in Communications and Member Engagement
- 21 CSOGIE Town Hall Event Opens Conversation on LGBTQ+ Issues in Social Work Education
- 21 IDEA-B Survey Yields Important Findings

Ensuring CSWE Provides Exceptional Value to Our Members and Member Institutions

- 22 2023 Annual Program Meeting
- 22 New in 2023
- 23 APM Plenary Speaker Highlights
- 24 APM Attendee Highlights

Membership and Governance

- 26 Membership at a Glance
- 26 CSWE Donors 2023–2024
- 27 CSWE Governance Structure
- 28 2023–2024 Officers and Board of Directors
- 29 CSWE Staff Organization

Welcome Letter From the President and the Chair of the Board

Aloha Colleagues, Friends, and Families

Warm greetings from CSWE!

We are extremely pleased to share with you a summary of our journey in 2024. We are deeply grateful for and to all of you as members of the Council on Social Work Education (CSWE) who have dedicated your time, talent, and treasure to the success of our programs, initiatives, and activities. We thank you for your dedicated service on our Board of Directors, National Nominating Committee, Board of Accreditation, commissions and councils, committees, task forces, advisory boards, and affiliated groups to advance excellence and innovation in social work education, research, and leadership. We acknowledge the overwhelming challenges, tragedies, and losses that we continue to face, and the extraordinary hope and strength of the human spirit that have carried us through these trying times. We thank you for your steadfast leadership in the classroom, on campus, and in the community during these challenging times.

We are #oneCSWE from Guahan and Hawai'i across the Continental United States to Puerto Rico and the Virgin Islands. A few highlights: The 2023 Annual Program Meeting demonstrated that in-person meetings are back and better than ever, with more than 3,000 students, educators, and program staff on hand to experience everything from unforgettable keynote speakers to extended learning opportunities through pre-conference institutes and educational sessions. Among these, the inaugural Diversity Center Pre-Conference Institute stood out as a unique experiential learning experience in Atlanta.

We are experiencing continued growth, with more than 900 member programs, which include accredited programs and those in candidacy. With our new membership model, more than 7,000 individuals (including program faculty, students, staff, and administrators) have linked to their membership in CSWE.

The *Journal of Social Work Education* continues to grow in breadth and depth in response to membership needs. The CSWE Press published its first book under new leadership, *Successful Baccalaureate Social Work Programs: A Guide for Current and Emerging Leaders*, edited by Needha Boutté-Queen and Susan Mapp, kicking off a new era of demonstrable thought leadership from CSWE. Indeed, the future of social work education is bright!

Again, from the bottom of our hearts, thank you for supporting CSWE over the years. We hope that this Annual Report celebrates our collective journey.

Respectfully,

Halaevalu F.O. Vakalahi, PhD, MSW
CSWE President & CEO

Hilary Weaver, DSW, MSW
CSWE Board of Directors Chair



Providing Leadership for the Future of Social Work Education

CSWE Appoints Dr. Megan Fujita as Vice President of Education

In September 2023, the Council on Social Work Education (CSWE) announced Megan Fujita, PhD, MSW, as its new Vice President of Education. Dr. Fujita now is charged with advancing the organization's mission to promote and enhance the quality of social work education and ensure its continued relevance in today's rapidly evolving educational landscape.

"We are very much looking forward to Megan's leadership of the education division at CSWE," said Dr. Halaevalu F.O. Vakalahi, CSWE President and CEO, at the time of the appointment.

"We will all be blessed with Megan's talents and expertise in social work accreditation and education. As a leader, she has unquestionable work ethics, wisdom, authenticity, and the ability to hold people accountable with grace and generosity."

Dr. Fujita brings a wealth of experience and leadership expertise to CSWE. In her previous role as the Executive Director of Accreditation at CSWE, she oversaw accreditation operations of more than 900 social work education programs and post-master's social work fellowship programs across the United States and its territories. She holds a PhD in education

policy and research methodology from George Mason University and a Master of Social Work in interpersonal practice and mental health from the University of Michigan. Dr. Fujita's research focuses on post-secondary/financial decision-making and mental health among students with disabilities and their families.



Dr. Megan Fujita

"I am thrilled to take on this role at CSWE," Dr. Fujita said. "Partnership is key to this vision, and I look forward to working with programs and members in developing and providing innovative educational programming, offering services that highlight the work of our members, and helping to prepare social work students for practice grounded in equity and anti-oppression."

In this role, Dr. Fujita has broad responsibilities for the strategic development and implementation of programs, products and services that will support CSWE members in teaching and learning, leadership and curriculum development, and educational research. She will oversee key programs and centers, including CSWE's Minority Fellowship Program, the Kendall Institute, and the Diversity Center. In addition, she will assume responsibility for leadership development initiatives in collaboration with CSWE's Council on Leadership Development.

Accreditation by the Numbers

550
accredited baccalaureate programs

340
accredited master's programs

4
accredited post-master's social work fellowship programs

8
baccalaureate programs in candidacy

21
master's programs in candidacy

All numbers on this page are as of the June 2024 Board of Accreditation (BOA) meeting.

2023–2024 Social Work Program Candidacy

4	baccalaureate programs granted candidacy	30	baccalaureate progress reports accepted
11	master's programs granted candidacy	25	master's progress reports accepted
5	baccalaureate programs granted second year of candidacy	2	baccalaureate programs had accreditation restored
9	master's programs granted second year of candidacy	2	master's programs had accreditation restored
9	baccalaureate programs granted initial accreditation	4	baccalaureate programs were ordered a modified site visit
19	master's programs granted initial accreditation	78	baccalaureate programs issued letters of instruction
56	baccalaureate programs granted reaffirmation of accreditation	47	master's programs issued letters of instruction
29	master's programs granted reaffirmation of accreditation		

Accreditation Volunteers and Visits by the Numbers

29 BOA members from **18** states working in **17** states

8 post-BOA candidacy visitors living and working in **8** states

8 fellowship review committee (FRC) members from **6** states

179 certified site visitors from **40** states and Washington, DC, working in **44** states and Washington, DC

63 candidacy visits conducted in **30** states and Washington, DC

102 site visits conducted in **29** states, Guam, and Puerto Rico

1 post-master's fellowship site visit conducted by **2** FRC members

About the BOA and Site Visitors

Accreditation by the CSWE Board of Accreditation (BOA) is a peer-review process supported by the work of dedicated volunteers serving as site visitors, members of the Fellowship Review Committee (FRC), and BOA members.

The BOA is responsible for establishing accreditation standards and processes and conducting accreditation reviews to ensure the delivery of high-quality educational programs that prepare graduates to meet the changing demands of professional social work practice. BOA members are also visitors to developing programs in the candidacy process seeking accreditation.

CSWE-accredited social work education and post-MSW fellowship programs host visits as an integral part of the accreditation process. Site visitors and the FRC members review program documents and conduct visits to programs on behalf of the BOA, who confer and ratify accreditation decisions.

In total, during the 2023–2024 year, the accreditation volunteers comprised 29 BOA members, 179 reaffirmation site visitors, and nine FRC members.

Post-MSW Fellowship Update

The Fellowship Review Committee (FRC) serves as the primary review body for fellowship programs seeking initial or continued accreditation and is responsible for making accreditation decision recommendations to the CSWE Board of Accreditation (BOA). The BOA reviews FRC recommendations and ratifies accreditation decisions.

Post-MSW fellowship accreditation is beginning to gain traction following the conclusion of the accreditation pilot in 2022. There are now four accredited post-MSW fellowship programs and a site visit to a fifth program was conducted in spring 2024.

Staff have also been working with five additional programs that have also commenced the accreditation process by submitting their fellowship accreditation eligibility applications.



BOA Chair Dr. Tom Gregoire welcomes BOA volunteers to the accreditation volunteer reception at CSWE's 2023 Annual Program Meeting.



BOA members and CSWE accreditation staff at the June 2024 BOA Meeting in Alexandria, VA.

CSWE: A Trusted Leader and Partner

CSWE has established itself as an authoritative source of information on the preparation of social workers within the profession and beyond through its strategic partnerships and coalitions with other organizations. In addition, CSWE helps lead the Social Work Leadership Roundtable in supporting social work workforce and public relations initiatives.

CSWE Strategic Partners

- Association of Baccalaureate Social Work Program Directors
- Association of Social Work Boards
- Congressional Research Institute for Social Work and Policy
- Educating Social Workers in Palliative and End-of-Life Care
- Grand Challenges for Social Work
- Group for the Advancement of Doctoral Education in Social Work
- Grant-Funded Initiatives
- International Association of Schools of Social Work
- National Association of Social Work Deans and Directors of Schools of Social Work
- National Association of Social Workers
- Society for Social Work and Research

Member Organizations of the Social Work Leadership Roundtable

- American Academy of Social Work and Social Welfare
- Association of Baccalaureate Social Work Program Directors
- Association of Black Social Workers
- Association of Social Work Boards
- Council on Social Work Education

- Grand Challenges for Social Work
- Group for the Advancement of Doctoral Education in Social Work
- National Association of Social Work Deans and Directors of Schools of Social Work
- National Association of Social Workers
- Social Work Collective to Advance Research: Deans and Directors Group
- Society for Social Work and Research

External Coalitions and Partnerships

- Eldercare Workforce Alliance Interprofessional Education Collaborative
- Federation of Associations of Schools of the Health Professions
- Forum on Mental Health and Substance Use Disorders
- Global Forum on Innovations in Health and Professional Education
- National Academies of Sciences, Engineering, and Medicine
- National Academies of Practice
- National Collaborative for Improving the Clinical Learning Environment
- Students Assist America
- Washington Higher Education Secretariat
- Social Work Helper

Social Work Leadership Roundtable Joint Statement on Peace for Israel and Palestine

After the outbreak of the Israel– Hamas war on October 7, 2023, members of the Social Work Leadership Roundtable convened to echo the concerns of the [International Federation of Social Workers](#) in urging for peace and safety, and standing against terrorism and the intentional and atrocious violation of human rights and harm.

In their [statement](#), they noted: “The well-being of Israeli and Palestinian people is deeply intertwined. Living in this shared region, there is immense suffering, adversity, fear, and heart-breaking loss. As social work leaders and professionals we stand together in support of the human right to live in safety, with dignity, and to have basic human needs met. The violence and suffering unfolding in the region represent a humanitarian crisis with global reach. We know all too well that this violence will destroy families and communities and impose long-term impacts on mental health. We reiterate our commitment to safety, security, and dignity for all within a context of peaceful coexistence. We extend our profound sympathies to students and educators in our member programs who have been affected directly or indirectly by this violence.”

Members of the Social Work Leadership Roundtable signing on to the statement were:

- American Academy of Social Work and Social Welfare
- Association of Baccalaureate Social Work Program Directors
- Association of Social Work Boards
- Council on Social Work Education
- Grand Challenges for Social Work
- Group for the Advancement of Doctoral Education in Social Work
- National Association of Deans and Directors of Schools of Social Work

- National Association of Social Workers
- Social Work Collective to Advance Research: Deans and Directors Group
- Society for Social Work and Research

CSWE President and CEO Offers Comments at Beloved Community Event



In January 2024, CSWE President and CEO Dr. Halaevalu F. O. Vakalahi was invited to present a [tribute to Dr. Martin Luther King](#) at the Beloved Community Commemorative Service at Ebenezer Baptist Church in Atlanta, GA.

In her address, Dr. Vakalahi said, “Justice for all humans and nonhumans; the seen and the unseen; the sense of centeredness, connection, and shared responsibility for people and place in Dr. King’s legacy is echoed in the vision and mission of the Council on Social Work Education: to prepare social work educators, researchers, practitioners, and leaders to promote health, well being, dignity, and worth of the person, and justice for all.”

Research Features New Data: Military Veteran Graduates, Courses Taught in Languages Other Than English

Each year, CSWE publishes “Statistics on Social Work Education in the United States,” a report on the annual survey of social work education programs nationwide. The 2022–2023 edition of the “State of Social Work Education” report is available [here](#).

The survey continues to gather comprehensive data across baccalaureate, master’s, practice doctoral (DSW), and research doctoral (PhD) social work education programs. It includes details on program structure, enrollments, degrees awarded, student demographics, and applications and first-time enrollment for doctoral programs. Additionally, the survey captures data on full- and part-time faculty, as well as social work administrative staff members, ensuring a thorough overview of social work education in the United States.

Key findings from the 2022–2023 survey:

- **Baccalaureate Programs:** Baccalaureate graduation rates increased by 7.5% over the past year, with a total of 17,972 degrees awarded during the 2021–2022 academic year. For the first time, data was collected on military veterans, revealing that 2.3% of baccalaureate graduates identified as having military service experience. Additionally, 28.9% of graduates identified as the first in their families to pursue a baccalaureate degree, highlighting the growing diversity within social work programs.
- **Master’s Programs:** The survey also provided valuable insights into MSW programs. A total of 614 MSW graduates identified as military veterans, representing 1.8% of all MSW graduates. Additionally, 3,541 MSW graduates were first-generation students, accounting for 10.7% of the MSW graduating class. In total, 32,801 MSW degrees were conferred as of May 2022, marking a 23.7% increase from the previous year’s total of 26,514.
- **New Data Points:** The 2022–2023 survey introduced several new variables, including data on courses taught in languages other than English and information on military veteran graduates. These

additions provide a more comprehensive view of the accessibility and inclusivity of social work education, demonstrating CSWE’s commitment to capturing the diverse experiences of students and programs.

Commission on Research Takes on Special Projects

CSWE’s Commission on Research (COR) had a productive 2023–2024 year, with several achievements and new initiatives. Building on its previous work, COR successfully completed two special projects focused on assessing anti-racism, diversity, equity, and inclusion competencies, specifically Competencies 4 and 9, within social work programs nationwide.

Support After the Maui Wildfires

In August 2023, CSWE extended thoughts and prayers to our ‘ohana, friends, and colleagues in Hawai‘i, especially on the island of Maui, as they navigated the aftermath of the tragic wildfires. The CSWE community supported Maui relief efforts through the Hawai‘i Community Foundation Maui Strong Fund and the Council for Native Hawaiian Advancement Kāko‘o Maui Fund.

Members were also encouraged to support social work students residing on Maui by donating directly to the University of Hawai‘i at Mānoa Thompson School of Social Work and Public Health’s Social Work Student Aid Fund (Fund #12015764), and licensed mental health professionals rallied resources to coordinate mental health services for those affected.





CSWE Government Relations

SUPPORTING SOCIAL WORK EDUCATION THROUGH ADVOCACY AND POLICY

A condensed and noncomprehensive overview of CSWE Government Relations' activities over the past year is provided below.

PROMOTING HIGHER EDUCATION

CSWE Government Relations continues to advocate for federal student aid funding for institutions and students in critical programs that support schools of social work and social work students. CSWE has actively advocated in support of ensuring quality and accessible higher education through signing on to coalition letters in support of doubling the Pell Grant, expanding support for Minority Serving Institutions, addressing student loan debt and the Public Service Loan Forgiveness program through legislation, and other agency engagement opportunities. Additionally, the team was successful in addressing draft regulations from the U.S. Department of Education on financial value transparency requirements that impact social work training. CSWE has begun to re-establish quarterly engagements with the National Social Work Program Office at the U.S. Department of Veterans' Affairs (VA) to expand collaborative efforts between CSWE and VA social work programming.

CSWE released two statements in response to developments from the U.S. Supreme Court in July 2023. The first condemned the Court's ruling striking down the ability of the Biden-Harris administration to implement their student loan forgiveness plan. In this [statement](#), CSWE affirmed its commitment to advocating for student loan forgiveness. "Equitable access to higher education leads to a well educated and diverse workforce that ultimately sustains healthy families and communities," the statement said. "This decision should catalyze the higher education community to commit to fostering equity in accessing quality higher education. CSWE is committed to this endeavor and looks forward to working with its membership to continue to advocate

for equitable and affordable access to higher education, especially social work education."

The second [statement](#) called for higher education to recommit to racial equity and justice in the face of the Court's ruling invalidating consideration of race in higher education admission processes. CSWE called on its membership and programs to continue to "demonstrate anti-racist and anti-oppressive social work practice at the individual, family, group, organizational, community, research, and policy levels" as called for in the 2022 Educational Policy and Accreditation Standards. CSWE is committed to this effort and looks forward to working with its membership to continue to dismantle systemic barriers to equality and equity, particularly in social work education and across higher education.

EXPANDING SUPPORT FOR SOCIAL WORK TRAINING PROGRAMS

Over the past year, expanding federal support for social work healthcare programs was another major priority. CSWE government relations advocacy efforts included simultaneously engaging with congressional champions throughout the FY 2024 and FY 2025 funding process, establishing new or re-establishing existing relationships with key federal agency officials who oversee programs of importance to CSWE and its membership, and promoting social work's involvement in federal health care programs through other channels. These activities once again contributed to increases and steady funding levels for the following health care education and training programs:

- The Health Resources and Services Administration's (HRSA) Title VII health professions programs, including the Behavioral Health Workforce Education and Training program, the Geriatrics Workforce Enhancement Program, the Geriatrics Academic Career Award, and the Scholarships for Disadvantaged Students Program
- The Substance Abuse and Mental Health Services Administration's Minority Fellowship Program and

988 Behavioral Health Crisis Services Program

- The National Institutes of Health's biomedical and health-related research, which includes social and behavioral science research

CSWE Government Relations also shepherded new federal agency relationships through meetings with officials at the Administration for Community Living, Veterans Health Administration, the National Science Foundation and the Office of the Vice President at the White House. CSWE also engaged with HRSA and Congress regarding support for pre-licensure social workers completing field placements, and held meetings with the founders of the Senate Mental Health Caucus to familiarize them with our priorities.

ADVANCING SOCIAL JUSTICE AND RESEARCH

CSWE and the Society for Social Work and Research met with representatives from the Office of Behavioral and Social Sciences at the National Institutes of Health (NIH), to raise the profile of the profession and highlight the important role social workers play in addressing social challenges through research and education. CSWE continues to highlight the important role social work researchers can play in improving the diversity of the biomedical workforce and ways in which the NIH can alleviate barriers for researchers from underrepresented racial and ethnic groups, along with encouraging the NIH to expand the breadth of research it supports, especially in social and behavioral science and social determinants of health. In addition, CSWE continued to support Doctoral Student Policy Fellows in congressional offices and with the CSWE Government Relations team.

CSWE Government Relations Highlights

- We continue to advocate for critical social work education and training programs like the Pell Grant program, the Behavioral Health Workforce Education and Training Program, and the Minority Fellowship Program, among others.
- We continue to build relationships with federal agencies and policymakers to cultivate social work champions and increase support for social work training and education programs across sectors.
- We prioritize social work advocacy and policy by advancing opportunities for social work students to engage with policymakers and policymaking opportunities.
- We continue to highlight the role social workers play in improving the diversity of the biomedical workforce and find ways federal agencies can alleviate barriers for researchers from underrepresented racial and ethnic groups through social work research.

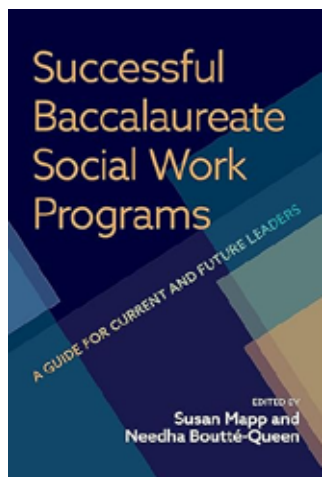
The CSWE Fellows Forum, which took place in May 2024, brought together nearly 80 students from across the country to participate in a Capitol Hill Day in Washington, D.C. The students were able to advocate for the continued support of programs that strengthen social work education and share firsthand experiences of their research and practice as well as showcase how federal student debt forgiveness programs are crucial to their career development. Through these student-led meetings, Congressional staffers were able to hear directly from constituents about the crucial role that social workers play in promoting individual, family, and community well-being, as well as the challenges that social workers

face. This opportunity allowed students to develop their advocacy skills and provided them with legislative background on the programs that contribute to their education. Read more about the CSWE Fellows Forum on p. 18.

Additionally, CSWE submitted a response to the NIH Environmental Justice Working Group request for information soliciting input from community stakeholders on the approaches the NIH can take to advance environmental justice through research and capacity building. Through its response, CSWE was able to comment on the importance of incorporating social workers into environmental justice research and how they can be leveraged by the scientific workforce to develop training that ensures translational research is accessible for all affected communities. The response also highlighted the need to expand inclusiveness in research and education of environmental justice to include culturally responsive evidence-based assessments, best practices, community generated data, and intervention tools that holistically address mental health needs. CSWE has also been active in the reauthorization of the Older Americans Act.

Promoting Quality Teaching, Learning, and Scholarship to Prepare Graduates for the Future of Social Work Practice

New Book Equips Educators With Essential Strategies for Leading BSW Education



In September 2023, CSWE Press was pleased to publish [Successful Baccalaureate Social Work Programs: A Guide for Current and Emerging Leaders](#), edited by Needha Boutté-Queen, PhD, and Susan Mapp, PhD, MSSW. The book features the combined expertise of 25 contributors seeking to fill the leadership knowledge gap that has developed during this period of growth and evolution in the social work professions, specifically at the BSW level. “Demand for this leadership will be at an all-time high as more and more students recognize that a baccalaureate degree in social work opens the door to a wide range

of careers. It all starts here,” said Dr. Halaevalu F. O. Vakalahi, President and CEO of CSWE, upon publication of the book. CSWE Press is honored to partner with so many educators and scholars on the start of their leadership journeys.

Substance Use Disorders Education and Leadership Scholar Program

The [Substance Use Disorders Education and Leadership Scholars \(SUDEALS\)](#) project was funded by a Substance Abuse and Mental Health Services Administration (SAMHSA) Opioid Response

Network subaward from the American Academy of Addiction Psychiatry to develop a cohort of 10 BSW and MSW programs to combine the standardized CSWE Practitioner Education in Substance Use Disorders curriculum with practice, research, and scholarships to incentivize BSW and MSW students to practice in this specialty area. The 2023–2024 cohort included 40 students and 10 partner schools representing minority-serving institutions and significant geographic diversity:

- Bridgewater State University
- Clark Atlanta University
- Florida Atlantic University
- North Carolina State University
- Ramapo College of New Jersey
- Southern Connecticut State University
- St. Catherine University
- St. Edward’s University
- University of Texas at Arlington
- University of Alaska Anchorage

CSWE is wrapping up the final year of the project term, which was funded at over \$250,000. Assessment of student knowledge and self-efficacy as a practitioner were captured in the SUDEALS program. Findings from the General Self-Efficacy Assessment demonstrate a consistent positive influence on participants’ sense of self-efficacy. Students also showed increased knowledge pertaining to substance use brief intervention and referral to treatment. CSWE hopes to continue SUDEALS and has applied for additional funding to continue the project through September 2027.

Doctoral Student Policy Fellowship Program

CSWE, in partnership with the Society for Social Work Research (SSWR) and the Group for the Advancement of Doctoral



Education in Social Work (GADE), launched the first year of the Social Work Doctoral Student Policy Fellowship (DSPF) in 2022. The Fellowship is funded through a 2-year award of

\$100,000 from the New York Community Trust. The goal of the fellowship is to develop a cohort of doctoral-level social workers who influence social policy through the federal legislative policy process. CSWE completed the following key steps in project implementation in Year 2 (2023–2024) of the fellowship:

- Assembled a steering committee of key experts from CSWE, SSWR, and GADE
- Selected 10 second-year social work doctoral students through a competitive application process; selected doctoral students have a diverse range of research topics and areas of focus
- Offered fellows the opportunity to meet with mentors to expand professional networks and practice at the CSWE Annual Program Meeting (APM) in October 2023
- Provided fellows experiential learning on congressional legislative processes such as appropriations and authorization facilitated by policy and legislative experts
- Facilitated regular virtual meetings to offer participants mentorship support as a cohort and on a one-on-one basis, as requested
- Supported fellows in linking their academic research with legislative policies and developing easy-to-read advocacy materials and policy briefs
- Distributed fellow stipends to support their doctoral studies

Fellows have greatly contributed to their congressional offices and policy placements. For example, the congressional office of Representative David Trone (MD-06) stated that the DSPF fellow, “... served as a senior, valued member of the team and wrote policy for Rep. Trone’s legislative and appropriations work, and especially provided guidance on important programs to fund in the FY 2025 Labor-Health and Human Services Appropriations bill. On behalf of Rep. Trone and the entire staff, we highly recommend the DSPF Fellowship program.”

CSWE concluded Year 2 of the DSPF in June 2024 and applied for renewal funding to continue the program through December 2026.

Diversity Center Hosts Inaugural Preconference Institute at APM

The [CSWE Center for Diversity and Social and Economic Justice \(Diversity Center\)](#) provides CSWE members with the opportunity and the means to support greater diversity and social and economic justice in education, teaching, research, curricula, institutional arrangements, and leadership development.

Ahead of CSWE’s 2023 Annual Program Meeting (APM) in Atlanta, GA, the Diversity Center hosted its first Preconference Institute, titled “The Radical Tradition of Teaching Human Rights: Education, Reflection, and Action.” Participants visited the National Center for Civil and Human Rights, a museum dedicated to the achievements of the civil rights movement in the United States and stories from the struggles for human rights worldwide today, followed by a celebratory program at Clark Atlanta University’s School of Social Work that recognized 100 years of the school’s history as champions of diversity, equity, and inclusion. The institute concluded with a visit to the Martin Luther King, Jr. Center for Nonviolent Social Change (the King Center), a memorial and programmatic nonprofit established by Mrs. Coretta Scott King in 1968. The King Center serves as an educational and social change institution preserving the legacy of Dr. King and ensuring positive social impact.

A Fond Farewell to a Visionary Leader



Dr. Yolanda C. Padilla

CSWE would like to recognize Yolanda C. Padilla, PhD, for her leadership and vision as inaugural director of the [Diversity Center](#) from 2015 through June 2024. Dr. Padilla is currently the Associate Dean for Undergraduate Programs and Clara Pope Willoughby Centennial Professor at the Steve Hucks School of Social Work at the University of Texas at Austin.

About her time as director of the Diversity Center, Dr. Padilla said:

“I am grateful for the experiences I gained as inaugural director of the Center for Diversity and Social and Economic Justice these past 9 years. It has been a privilege to influence social work education at the national level in some small way. I strived to take social work education responses to a new level, with an eye to engaging students: resources that were interdisciplinary, global, and provided alternative perspectives.”

Under Dr. Padilla’s leadership, the Diversity Center produced numerous presentations and educator resources offering creative pedagogical approaches to diversity and justice education. To name a few, she led the development of the Diversity Center’s 2018–2021 strategic priorities; conducted a survey of all accredited social work programs on priorities for teaching diversity and justice, and organized Diversity Center content for CSWE’s Annual Program Meeting (APM). Diversity Center educator resources are archived on the CSWE website [here](#).

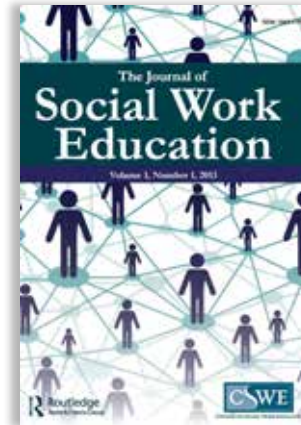
In the coming year, CSWE will develop additional educator resources and content for the Diversity Center – be on the lookout!

Leadership Changes, Grand Challenges Special Issue Among JWSE Highlights

In the 2023–2024 fiscal year, the *Journal of Social Work Education* (JSWE) experienced a decrease in its acceptance rate to 26%, down from 36% in 2022, indicating a more competitive review process. The average time from submission to first decision

improved to 161 days, a reduction of nearly 10% from 174 days the previous year; however, the time from submission to first post-review decision slightly increased, to 185 days. Conversely, the time from acceptance to online publication decreased significantly to 39 days, compared to 44 days in 2022.

As the term of Editor-in-Chief (EIC) Dr. Danielle Parrish and several Editorial Advisory Board (EAB) members neared its end in June 2023, preparations were made for a “Call for Editor-in-Chief” and a selection process for new EAB members, including discussions on potential support for the EIC role and expanding the EAB roster and reviewer pool. The EIC also accepted an extension of her term for an additional year as the search and application process continued.



JSWE published its 2023 special issue, “Preparing Students to Address the Grand Challenges for Social Work,” focused on interdisciplinary collaboration in social work in December 2023.

Looking ahead, JSWE’s 2024 special issue, which commemorates the 50th anniversary of CSWE’s Minority Fellowship Program (MFP), is progressing with guest editors former MFP Director Dr. Duy Nguyen and current MFP Director Dr. Collina Cooke. The special issue is scheduled for publication in early 2025.

JSWE Awards

Dr. Diana M. DiNitto (University of Texas at Austin), was selected as the *Journal of Social Work Education* (JSWE) Best Reviewer of 2023. Each year, the recipient of the Best Reviewer award is selected by the JSWE Editorial Advisory Board to recognize a manuscript reviewer who has demonstrated exceptional service in responsiveness to requests for review, timeliness in submitting completed reviews, and quality of written reviews.

The criteria for choosing the Best Articles published in JSWE include the importance and timeliness of the content, originality of thought, innovative conceptualization of the topic, and

presentation of conclusions and/or recommendations that add significantly to the professional knowledge base and to social work education. The categories for this year's selection were for the best conceptual, quantitative, qualitative, mixed methods, and teaching note articles. View the full 2023 Best Articles Awards [here](#).

Top 5 Most-Read JSWE Articles of 2023

- [Preparing Students to Address the Grand Challenges for Social Work: Researching, Teaching, and Practicing Interdisciplinary Collaboration](#) by Norma A. Alcantar, Courtney Cronley, Noelle Fields, Sondra J. Fogel, Stephen Mattingly, and Anne Nordberg
- [Preparing Social Workers for Emerging Roles in Police Social Work](#) by Isabel Logan, Robert Madden, and Matthew Solak
- [Social Work Education Anti-Racism \(SWEAR\) Scale](#) by April L. Murphy, Laneshia R. Conner, Austin Weiler, Becky Anthony, Jennifer R. Jewell, and Victoria Venable
- [From the Editor—Anticipating Social Work Education Issues in 2024](#) by Danielle E. Parrish, JSWE Editor-in-Chief
- [Interprofessional Education for Domestic Violence Safety Planning in Nursing and Social Work: A Scoping Review](#) by Saltanat Childress, Christine Highfill, Ricka Mammah, Rachel Voth Schrag, Karla Arenas-Itotia, Tracy Orwig, Thomas Dombrowsky, Jackie Michael, and Jenny Roye

Top 5 Most-Cited JSWE Articles of Past 3 Years

- [Black Social Workers Matter: Using Parallel Narratives to Discuss Social Work History](#) by Amittia Parker
- [The Religious/Spiritually Integrated Practice Assessment Scale for Educators: A National Survey of Social Work Faculty](#) by Holly K. Oxhandler, Edward C. Polson, and Kelsey M. Moffatt
- [Pivoting to Online Live-Streamed Simulations: Students' Experiences in Clinical Social Work Education](#) by Katherine Occhiuto, Karen Sewell, and Kenta Asakura

- [“I Know What I Know... Unless I Don't”: Examining Faculty Knowledge About Social Work Licensing](#) by J. Jay Miller, Molly Bode, Anne Adcock, Chunling Niu, and Dexter Freeman
- [Where Is the “T”? Centering Trans Experiences in Social Work Curricula Addressing LGBTQ+ Issues](#) by Hannah Kia, Kinnon Ross MacKinnon, and Antoine Coulombe

Kendall Institute Award Recipients

CSWE is pleased to announce the grantees for the eighth cycle of the Katherine A. Kendall Institute for International Social Work Education grant program. Grantees were selected based on their innovative projects that demonstrated sustainability, transferability, and potential to advance the field of international social work education. This year's grantees and projects are as follows:

Survivor Voice: Enhancing Global Social Work Education Through Survivor-Led Initiatives

Project Lead: Jerri Middleton, PhD
California Baptist University

Survivor Voice is an innovative project initiated by California Baptist University's Division of Social Work in partnership with the Eleison Foundation, a non-government organization serving survivors of human trafficking and gender-based violence in Cebu, Philippines. This initiative seeks to address a critical gap in social work education by introducing U.S. students to global issues of human trafficking and gender-based violence through participatory research methods that emphasize survivor voices and empowerment.

International Conversation Series

Project Lead: Sarah Collins, PhD
Concordia University Wisconsin

This project intends to bridge the gap that exists among curriculum expectations, instructor experience, and individual student resources available to engage in international study. It expands on the International Conversation Series, which has built an international learning community of faculty, staff and practitioners; facilitates a global discussion about justice issues and the field of social work; fosters international and interprofessional collaborations between faculty, students and

practitioners; and challenges participants to critically reflect on issues of cultural humility and responsiveness through global engagement.

Fostering Global Innovators in Social Work: A COIL Approach to Social Entrepreneurship

Project Lead: Limei Chen, PhD
George Mason University

In a world where social and economic disparities are increasingly entrenched, the field of social work is called upon to embrace innovation and resilience to effect meaningful change.

Recognizing the urgency of these challenges, this project proposes a pioneering initiative to integrate social entrepreneurship into social work education through a Collaborative Online International Learning (COIL) program.

Global Perspectives on Equitable Aging and Social Justice

Project Lead: Angela Perone, PhD
University of California, Berkeley

This project seeks to introduce social work students to global perspectives on equitable aging in foundational social work classes by creating a publicly accessible educational toolkit, database, and website with resources and international examples of equitable aging.

Dialogic Engagement in Global Social Work: A Resource Guide

Project Lead: Kelly Melekis, PhD
University of Vermont

The proposed project seeks to advance international social work education for U.S. students by bringing global social work scholars, practitioners, and students together through hybrid (online and in classroom) panels for authentic dialogic engagement based on the strengths, interests, and social work content foci of participants. The grantees plan to develop and disseminate *Dialogic Engagement in Global Social Work: A Resource Guide*, consisting of a series of videos of the initial dialogic interactions, corresponding guides for developing dialogic lessons and plans based on social work core curricula, and educational resources dedicated to enhancing student, faculty, and practitioner knowledge about local, national, and international issues. While social work issues shift and change, all materials will underscore process and methods to ensure sustainability and replicability.



Social Work Month 2024

In celebration of March as Social Work Month, CSWE held a Social Work Month Webinar Series. This series featured three distinct webinars showcasing the breadth and depth of social work education in support of the month's theme, "Empowering Social Workers! Inspiring Action, Leading Change."

Critical Dialogues: Using Art to Address Sexism, Racism, and Classism in Substance Use Disorder Treatment

This webinar explored the use of arts and critical dialogue in addressing racism, sexism, and classism in substance use disorder treatment.

Funding for this initiative was made possible (in part) by grant no. 1H79T1086770 from SAMHSA. The views expressed in written conference materials or publications and by speakers and moderators do not necessarily reflect the official policies of the Department of Health and Human Services; nor does mention of trade names, commercial practices, or organizations imply endorsement by the U.S. Government.

CSWE & HeadsUp Present: Advanced Early Psychosis Identification, Screening, and Intervention

This webinar presented an advanced discussion of early psychosis symptoms across the spectrum from risk symptoms to threshold psychotic disorders.

Peace Corps and Social Work

CSWE hosted the Peace Corps for a webinar highlighting how social work skills translate to Peace Corps service opportunities for both social work faculty and students.

Supporting the Career Development of Students, Faculty, Members, and Administrators



COUNCIL ON SOCIAL WORK EDUCATION MINORITY FELLOWSHIP PROGRAM

Now in its 50th year, CSWE’s [Minority Fellowship Program \(MFP\)](#) has served students at the master’s and doctoral levels who are preparing to provide leadership in practice, research, teaching, and policy promulgation in government and private organizations serving underrepresented and underserved persons with or at risk for mental health and/or substance use disorders.

CSWE Names Dr. Collina D. Cooke to MFP Leadership Role



Dr. Collina D. Cooke

In November 2023, CSWE welcomed its new MFP director, Collina D. Cooke, PhD, LCSW. Dr. Cooke comes to CSWE with a background in clinical social work and expertise in program management.

Dr. Cooke, a first-generation college student, earned her bachelor’s and master’s in social work, as well as her PhD from the University at Albany (State University of New York).

“I am so honored to be selected to serve as the director of a program that has been instrumental in nurturing social work students,” she said. “I look forward to continuing the amazing legacy of the program and supporting MSW and doctoral students as they learn how to find their voices as social workers and tackle head-on the challenges of being both a student and a young professional.”

MFP 50th Anniversary Planning

For the past 5 decades, CSWE’s MFPhas remained steadfast in its commitment to shaping the future of social work professionals by nurturing their skills and knowledge. This year marks the 50th anniversary of the program. In those years, the MFP has supported more than 800 MSW and doctoral social work students.

In celebration of the MFP’s 50th anniversary, a steering committee composed of MFP alumni was established. The committee has provided active support on several projects, including:

- Soliciting video submissions for the MFP 50th anniversary commemorative video
- Planning the MFP 50th Anniversary Awards Gala (scheduled for October 2024)
- Recruiting guest speakers for the MFP 50th Anniversary Alumni Series

The larger committee is made up of six sub-committees;

- Awards Gala Committee
- Publishing Committee
- Fundraising Committee
- Programming Committee
- History Committee
- Communications Committee

Shaping Futures: MFP’s Legacy—Diverse Perspectives on Research and Career Trajectories

In celebration of MFP’s 50th anniversary, MFP continued coordinating the MFP alumni series, “Shaping Futures: MFP’s Legacy—Diverse Perspectives on Research and Career Trajectories.” This series commemorates the MFP’s rich history and serves as a platform for developing and nurturing MFP fellows. The series invited MFP doctoral and masters alumni to lead 1-hour workshops or panel discussions in which they shared their expertise, career paths, research, initiatives, and MFP experiences, along with imparting words of wisdom for current MFP fellows.

Alumni Series:

- Dr. Henderson Presents: Purpose Driven Pivot: How My Discussion and Implications Section Took Me From Academia to Founder and CEO
- Dr. Blakey Presents: Experiences of Women Who Become Involved With Child Protection Resulting From Their Histories of Substance Abuse
- Dr. Jackson Presents: Teaching Opportunities in the Academy

The 2024 CSWE Fellows Forum

The CSWE Fellows Forum was held from May 12–15, 2024, in Alexandria, VA. The event theme was “Advancing Environmental Justice: Social Work Education and Policy,” and it provided CSWE student fellows opportunities to engage and network with one another and invited scholars, learn advocacy skills on Capitol Hill, and explore how to advance environmental justice in social work education and policy. Fellows from the CSWE MFP, Substance Use Disorders Education and Leadership Scholars, and Doctoral Student Policy Fellows programs participated in the forum.

Fellows had the chance to develop and refine their advocacy skills and learn how to effectively influence policy and legislation. Advocacy training allowed students to leverage their knowledge and skills to have meaningful conversations and champion environmental justice issues.



Dr. Karina L. Walters

Guest speakers included the opening plenary speaker, Dr. Karina L. Walters, Director of the Tribal Health Research Office at the National Institutes of Health; Dr. Michelle D. Hand, Assistant Professor of Social Work at George Mason University; and Dr. Meirong Liu, Associate Professor and Chair of Research Sequence at the Howard University School of Social Work.

Dr. Walters’ keynote, titled “Advancing Environmental Justice: Land-Based Healing and Indigenous Knowledges,” provided a comprehensive examination of the connection between environmental justice and social work, underscoring the necessity

of incorporating environmental considerations into social work education and policy development. By sharing real-world examples, research, and the impact of environmental factors on marginalized communities, Dr. Walters demonstrated the critical role of social work in addressing these issues.

Dr. Hand presented “Green Spaces, Environmental Justice, Social Determinants of Health, and Nature-Based Strategies for Wellness.” This session focused on the critical human rights aspects of access to clean air, water, a healthy environment, and green spaces—areas covered with grass, plants, or trees. She discussed the roles of policy and advocacy in the equitable distribution of these resources and the communities disproportionately affected by risks from climate disasters, pollution, and limited access to green spaces. The discussion addressed implications for future research, practice, and policy to advance wellness and environmental justice.

Dr. Liu addressed the role of environmental injustice in exacerbating health disparities among marginalized communities, particularly focusing on urban minority children living in public housing. Such communities often face increased risks due to historical traumas, environmental hazards, and discriminatory housing policies. Dr. Liu’s presentation detailed findings from research on African American families with asthmatic children residing in public housing in Washington, DC. Additionally, social workers learned how to integrate research and practical action to advocate for environmental justice, highlighting both the challenges and opportunities in this critical field.

2024 CSWE Fellows Forum

May 12-14, 2024
Washington, DC



Fostering a Diverse, Interconnected, and Inclusive Community of Social Work Educators

CSWE Kicks Off Instagram Presence, Commits to More Visual Storytelling

October 2023 saw the launch of [@oneCSWE](#) on Instagram, and we encouraged members to follow and become part of our vibrant community for an inside look at CSWE's mission, vision, and the amazing work of staff and volunteers. This social media



account is another way to stay updated on our latest news, events, and initiatives.

The successful launch of [@onecswe](#) at the 2023 Annual Program Meeting has been followed by more engagement throughout the year. Member programs and many individual members were quick to follow and engage with CSWE through the new account. In its first year, CSWE's Instagram following grew faster than any of our existing social networking platforms, and with the downturn in engagement on X/Twitter, Instagram became our go-to for quick content.

Upgrades in Communications and Member Engagement

This year brought a fresh new look to both *Compass*, CSWE's weekly newsletter, and CSWE Spark, our online member community.

CSWE Spark offers a brand-new user experience with a social media-like home feed of content from the communities you follow. It still offers an email list function that allows members to post and comment to communities by email, but it's now easier than ever to share the latest events and tips for other CSWE members through CSWE Spark.

Compass received a cleaner layout that makes it easier to locate content, and it's more popular than ever, with more than 8,000 subscribers and counting.

CSOGIE Town Hall Event Opens Conversation on LGBTQ+ Issues in Social Work Programs

On April 13, 2024, the Council on Sexual Orientation and Gender Identity and Expression (CSOGIE) hosted a virtual town hall for CSWE members to discuss the current state of LGBTQ+ concerns in social work education. At the town hall, we shared updates with the 26 CSWE members in attendance on the charge of CSOGIE and future activities, then had a listening session to hear from members about emerging LGBTQ+ concerns in social work programs.

The town hall was divided into breakout groups for faculty/staff and students. Members experienced interest in having CSOGIE provide consultations to programs on how to affirm and support LGBTQ+ communities at their programs, address a lack of specificity as it relates to LGBTQ+ issues in the educational policies and standards, host networking opportunities, and provide membership to social work students and junior faculty.

CSOGIE plans to publish a brief report on the town hall and have additional town hall events for membership.



IDEA-B Survey Yields Important Findings

In 2023, a significant study on Inclusion, Diversity, Equity, Accessibility, and Belonging (IDEA-B) in social work education was funded by CSWE and conducted by commissioners from the CSWE Commission on Membership and Professional Development (CMPD). The commissioners involved in this study included Joy Borah, Quincy Dinnerson, Jan M. Ivery, Shonda Lawrence, and Anthony P. Natale. Ric Munoz also joined the research team.

This study addressed two significant trends that are presenting new challenges to professional development in social work. Firstly, demographic changes are leading the United States toward a majority–minority transition, which has vast implications for higher education, particularly in the field of social work. Secondly, social work programs are increasingly focusing on IDEA-B, with dedicated positions such as deans, directors, and liaisons. Both trends highlight emerging and growing professional development needs within social work education.

To gather insights and experiences from social work faculty, staff, and students regarding IDEA-B practices in social work programs, a survey was devised by the commissioners. The commissioners are pleased to share that they had an impressive response rate, with 1,499 participants in the quantitative portion and 50 in the qualitative portion of the survey.

From the data collected, the CMPD commissioners have identified 12 quantitative manuscripts and an additional 8 qualitative manuscripts that could potentially emerge from this study. Given the significance of these findings and the potential impact they could have on social work education, the commission is exploring the possibility of a special issue or special double issue within the *Journal of Social Work Education* to showcase these research outcomes and have come up with a plan to begin writing and analyzing the data further for publication to further the profession of social work.

Ensuring CSWE Provides Exceptional Value to Our Members and Member Institutions



2023 Annual Program Meeting

The 69th Annual Program Meeting (APM) drew more than 3,000 people from around the country to Atlanta, GA, October 25–28, 2023.

The 2023 APM launched the “It’s Time to Act” theme, with the first in the series titled “Defining and Reckoning With Anti-Racist Social Work Education.” The series builds on the theme of the 2020–2022 APMs, which championed the need for critical conversations about racism, justice, and human rights. More than 900 presentations were accepted into the general education portion of APM.

New in 2023

The 2023 APM added a new plenary session on Saturday afternoon. The Future of Social Work is an exciting new focus for the main stage of APM, and CSWE was pleased to welcome Dr. Laura Burney Nissen.

The Preconference Institute lineup was tremendously enhanced by the addition of a new offsite experience offered by CSWE’s Center for Diversity and Social and Economic Justice. “The Radical Tradition of Teaching Human Rights: Education, Reflection, and Action” gave attendees the opportunity to visit local civil rights landmarks. Read more information about the Institute on p. 13.



2023 APM Plenary Speaker Highlights



DR. BERNICE A. KING

CSWE's 2023 APM kicked off with the Opening Plenary featuring Dr. Bernice A. King. Dr. King is a global thought leader, strategist, solutionist, orator, peace advocate, and CEO of the Martin Luther King, Jr. Center for Nonviolent Social Change (the King Center), which was founded by her mother as the official living memorial to the life, work, and legacy of her father.

Dr. King spoke of her journey of acceptance, which she noted required listening to opinions and values that do not align with our own and building a bridge toward connection and a beloved community.



DR. LAURA BURNEY NISSEN

The inaugural Future of Social Work plenary speaker was Laura Burney Nissen, PhD, MSW, a Foresight Practitioner and a Research Fellow with the Institute for the Future. She is the Principal Investigator and Director of the Social Work Health Futures Lab, funded by the Robert Wood Johnson Foundation. In her lecture, Dr. Nissen warned us that “the future is coming, whether we are ready or not.”

“Anticipatory social work is the frame I am asking you to consider to help people shape their present lives and create better futures in a complex and rapidly changing world,” she said.

Dr. Nissen also invited the audience to consider different focal points such as the future of climate change; the future of collective trauma/loss; the futures of justice and peace; the future of the arts and all forms of expression; and the futures of resistance, social action, and rebellion.



DR. MARÍA ELENA RAMOS TOVAR

The 2023 Hokenstad International Lecturer was María Elena Ramos Tovar, PhD, MA, Professor at the School of Social Work and Human Development at Universidad Autónoma de Nuevo León, where she specializes in migration and gender studies.

In her informative lecture, “Migrant Health Access: Building Bridges Through Research and Advocacy,” Dr. Ramos Tovar detailed her research and advocacy work on migrants’

rights and health access for those moving through Northeastern Mexico and the Texas Rio Grande Valley, including lessons learned regarding the importance of collaboration between actors from civil society organizations, academia, and government agencies.

The Hokenstad International Lecture is made possible by a generous donation from M.C. “Terry” Hokenstad and selected by a CSWE committee.



DR. JENNY JONES

The Commission for Diversity and Social and Economic Justice selected Jenny L. Jones, PhD, MSW, ACSW, Dean and Professor of Social Work at the Whitney M. Young, Jr. School of Social Work at Clark Atlanta University, as the 2023 Carl A. Scott Memorial Lecturer.

In her spirited and engaging lecture, “Voter Suppression: Revisiting Jim Crow as a Form of Racial Injustice,” Dr. Jones spoke about how current attacks on the Voting Rights Act have brought forth increased contemporary voter suppression, as demonstrated in recent elections. She also shared her voter engagement strategies and their impact, stating, “We have to continue to advocate for human rights, as voting is a human right.”



It's time to act. 

*Defining and Reckoning With
Anti-Racist Social Work Education*

**2023 APM
Attendee Highlights**

**October 26–29, 2023
Atlanta, GA**





Membership at a Glance

As of June 30, 2024

7,655
Total Members

5,715
Full-Time/Emeritus
Faculty

307
Part-Time/Adjunct
Faculty

1,806
Students

317
Staff

50
Associate
Members

2023–2024 CSWE Donors

Supporter (to \$99.99)

Jo As Nna
Cheryl Scott
Awudew Menberu

Gold (\$500.00–\$999.99)

Jorge Delva

Platinum (\$1,000 and up)

Julia Watkins

Just Keep Growing

Bylaws changes in 2022 opened individual CSWE membership to all faculty, students, and staff of accredited programs with no additional dues payment required. In the second year of this structure, individual membership nearly tripled.

Individual CSWE membership now includes full members, who include full-time and part-time faculty, students, and staff at dues-paying accredited social work programs, and associate members, who pay \$199 per year in member dues because they are not attached to a program.

Year Ending	Program	Individual
2019	853	2,465
2020	876	2,269
2021	871	1,834
2022	891	1,979
2023	903	5,773
2024	911	7,404

CSWE Governance Structure

June 2024



2023–2024 Officers and Board of Directors

OFFICERS

CHAIR

Dr. Hilary N. Weaver

State University of New York, University at Buffalo

VICE CHAIR/SECRETARY

Dr. Laura Quiros

Montclair State University

TREASURER

Dr. Debra Lavender-Bratcher

Texas Tech University

BOARD MEMBERS

Dr. Bronwyn Cross-Denny*

Sacred Heart University

Dr. Laura Curran

University of Connecticut

Dr. Shirley Gatenio-Gabel*

Fordham University

Dr. Christa Gilliam

Morgan State University

Dr. Thomas Gregoire*

The Ohio State University

Wendy Hernandez-De La Cruz

California State University

Ramona Ivy

Community Representative

Oskar Kemp

Virginia Commonwealth University

Dr. Suk-hee Kim

Northern Kentucky University

Dr. Mavis Major

Walden University

Dr. Kristin Mapson*

University of North Carolina at Wilmington

Dr. Golam Mathbor*

Monmouth University

Michael J. Monti

Community representative

Dr. Quenton Nichols

Fayetteville State University

Dr. Tonya Perry

Alabama A&M University

Dr. Vanessa Robinson-Dooley

Simmons University

Dr. Patricia Saleeby

Bradley University

Dr. Matthew Theriot*

University of Central Florida

Dr. Kathi Trawver

University of Alaska Anchorage

Dr. Halaevalu Vakalahi*

CSWE

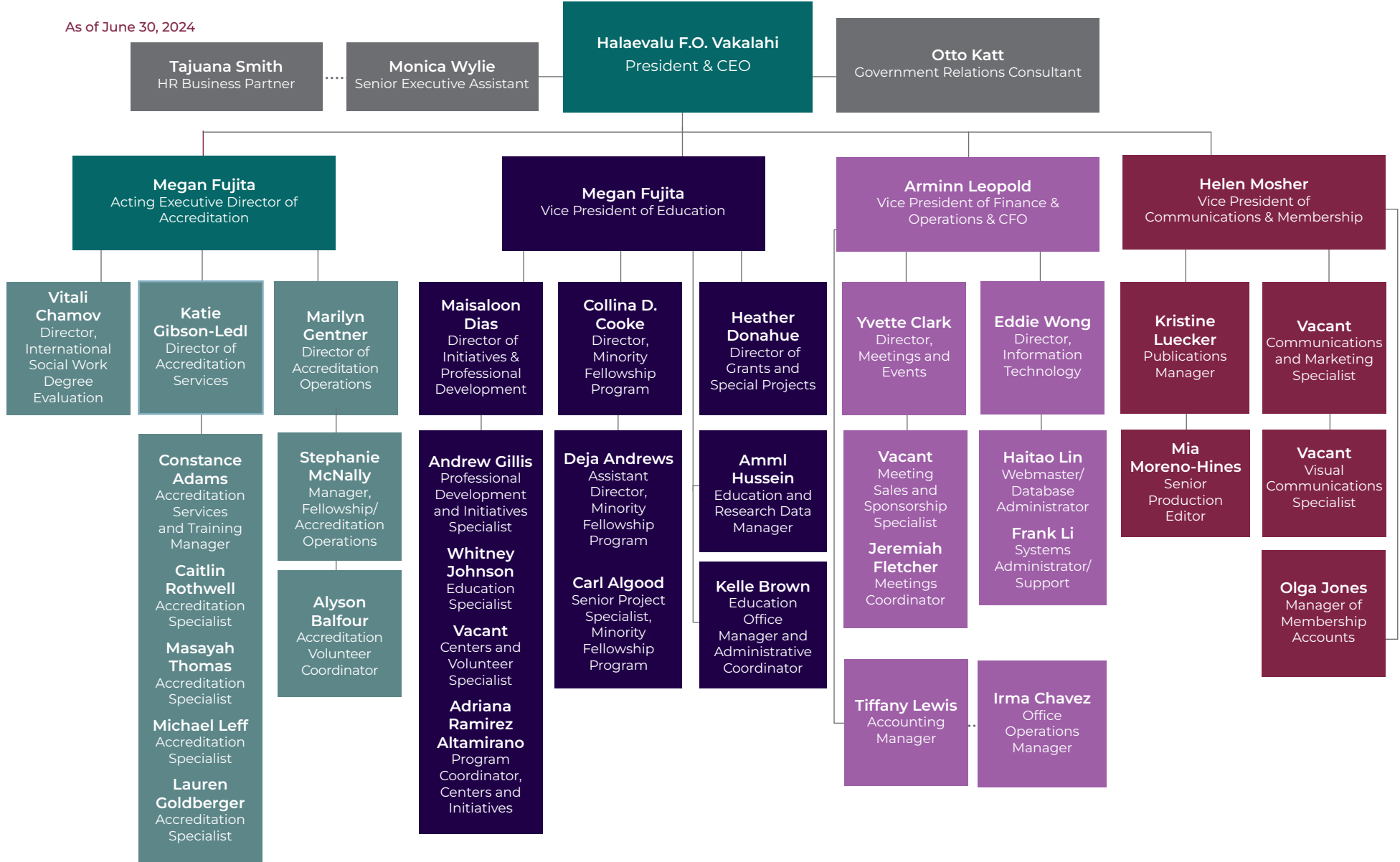
Dr. Eugenia Weiss

University of Nevada, Reno

** indicates non-voting ex officio members*

CSWE Staff Organization

As of June 30, 2024





COUNCIL ON SOCIAL WORK EDUCATION

333 John Carlyle Street, Suite 400 • Alexandria, VA 22314 • PHONE: +1.703.683.8080 • FAX: +1.703.683.8099 • Email: info@cswe.org • www.cswe.org

Land Acknowledgment: CSWE acknowledges that we are on the ancestral lands of Indigenous Peoples from time immemorial. Indigenous Peoples once had and continue to have extended networks of relatives that include human and nonhuman life, as well as the seen and the unseen across diverse geopolitical and ecological spaces. CSWE recognizes and respects all Indigenous Peoples, their histories, their sovereign political rights, and their sacred ties to the land and waters.

Copyright © 2024 Council on Social Work Education